

產品規格書

Product Specification

Customer: *****
Cust. Material No.: *****
Cust. Product No.: *****
Elight No.: EB104-40-214162W
Production: 10.4" LED Driver

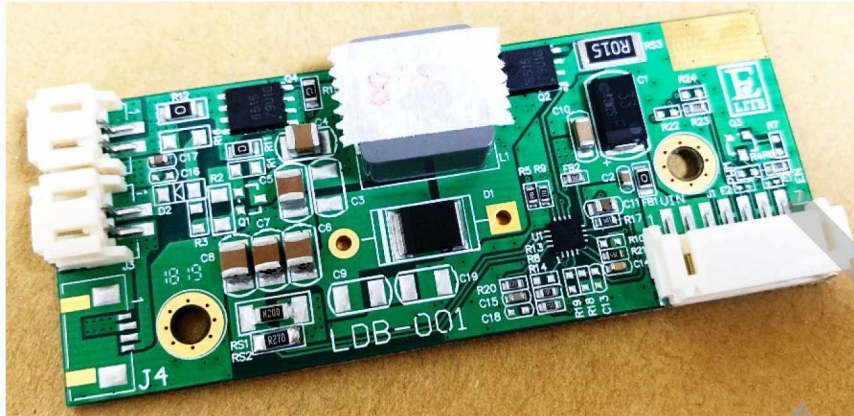
Applied Mode: *****

Approved	Review	Author

Initial : 2018-09-19	Revised:	Version:
Document No.: QA01-180919-00		
Customer Signature	Data of approval	

1. General Description

This Product Specification is made to be the standard of Elite manufactured LED Driving Board such a standard will be followed in ***** production, shipment, and quality inspection. for EB104-40-214162W



2. Feature

- 30W LED Driver
- Constant-Current Control
- Support PWM Dimming

3. Protection

Item	Max.	Remark
Over Current Protection (OCP)	Depending on LED B/L	
Over Volyage Protection (OVP)	30V (Note1)	

Note1 : When the LED string is opened, over voltage protection will limit the output to approximately 56V

4. Optional Backlight Driving Condition

Item	Symbol	Min.	Typ.	Max.	Unit	Remark
LED Voltage	V_{LED}		27		V	
LED Current	I_{LED}		300		mA	

5. Absolute maximum ratings

Parameter	Symbol	Min.	Typ.	Max.	Unit	Remark
Input Voltage	V_{in}	10.8	12	15	V	
Output Voltage	V_{out}			50	V	
Output Current	I_{out}			1000	mA	

6. Interface Characteristics

Parameter	Symbol	Min.	Typ.	Max.	Unit	Remark
Backlight on Voltage	INVON	1.25	5	V_{in}	V	
Backlight off Voltage	INVON			0.4	V	
PWM Control	PWM	3.3	5		V	
PWM Control Frequency	PWM	85	100		Hz	
PWM Control Duty	PWM	0		100	%	

7. Environmental

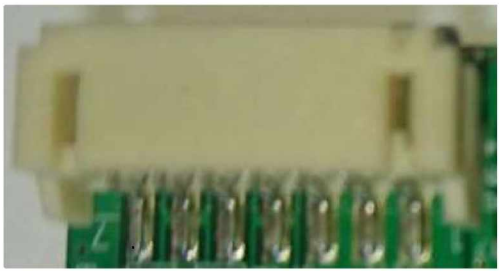

Item	Symbol	Min.	Typ.	Max.	Unit	Remark
Operating Temperature	T_{op}	Ha = 90%RH	0	60	°C	
Storage Temperature	T_{stg}	Ha = 90%RH	-20	85	°C	

8. Connector Socket

8.1. Connector Type

Connector J1	
Connector Name / Designation	For Signal Connector
Manufacturer JST	JST or compatible
Type / Part Number	S7B-PH-SM4-TB or compatible
Mating Housing / Part Number	PHR-7 or compatible

Connector J2 & J3	
Connector Name / Designation	For Signal Connector
Manufacturer	JST or compatible
Type / Part Number	S2B-PH-SM4-TB or compatible
Mating Housing / Part Number	PHR-2 or compatible

J1 (S7B-PH-SM4-TB)	J2 & J3 (S2B-PH-SM4-TB)
 <p style="text-align: center;">↑ (Pin1)</p>	 <p style="text-align: center;">↑ (Pin 1)</p>

8.2. Pin Definition

Connector (J1)		
Pin No.	Symbol	Description
1	V _{in}	Power Input (+12V)
2	V _{in}	Power Input (+12V)
3	V _{in}	Power Input (+12V)
4	GND	Ground
5	PWM	PWM Brightness Control
6	GND	Ground
7	EN	Backlight on/off Control (5V / 0V)

Connector (J2 & J3)		
Pin No.	Symbol	Description
1	V_LED+	LED Power +
2	V_LED-	LED Power -

9. Mechanical Characteristics

9.1. Dimension: 75(L) *30(W) *8.5(H) mm

9.2. Weight: MAX. 20g

