

產品規格書

Product Specification

Customer: *****
Cust. Material No.: *****
Cust. Product No.: *****
Elight No.: EB185-48-408230w
Production: 18.5" LED Driver Board

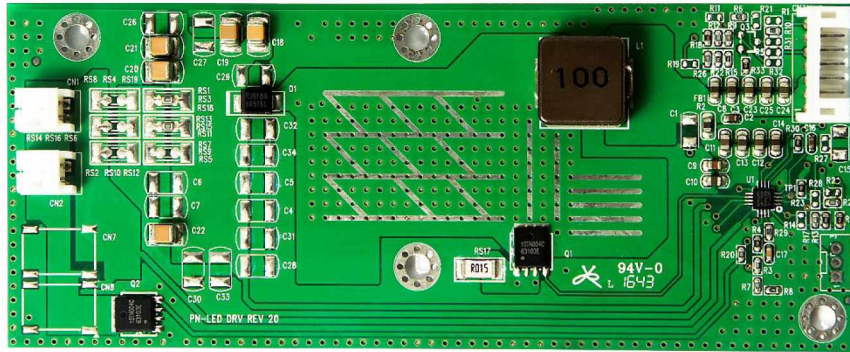
Applied Mode: *****

Approved	Review	Author

Initial :	Revised:	Version:
Document No.:		
Customer Signature	Data of approval	

1. General Description

This Product Specification is made to be the standard LED Driving Board such astandard will be followed in ***** production, shipment, and quality inspection. For EB185-48-408230w



2. Feature

- 30W LED Driver
- V_{IN} 5~40V
- V_{OUT} 70V (MAX.)
- PWM 200~2K Hz
- ROHS Compliant

3. Protection

Item	Max.	Remark
Over Current Protection (OCP)	Depending on LED B/L	
Over Volyage Protection (OVP)	30V	

4. Optional Backlight Driving Condition

Item	Symbol	Min.	Typ.	Max.	Unit	Remark
LED Voltage	V_{LED}		30		V	
LED Current	I_{LED}		1200		mA	

5. Absolute maximum ratings

Parameter	Symbol	Min.	Typ.	Max.	Unit	Remark
Input Voltage	V_{in}	10.8	12	15	V	
Output Voltage	V_{out}			50	V	
Output Current	I_{out}			1000	mA	
Output power	Watt	6	8	12	Watt	

6. Interface Characteristics

Parameter	Symbol	Min.	Typ.	Max.	Unit	Remark
Backlight on Voltage	INVON	1.25	5	V_{in}	V	
Backlight off Voltage	INVON			0.4	V	
PWM Control	PWM	3.3	5		V	
PWM Control Frequency	PWM	85	100		Hz	
PWM Control Duty	PWM	0		100	%	

7. Environmental

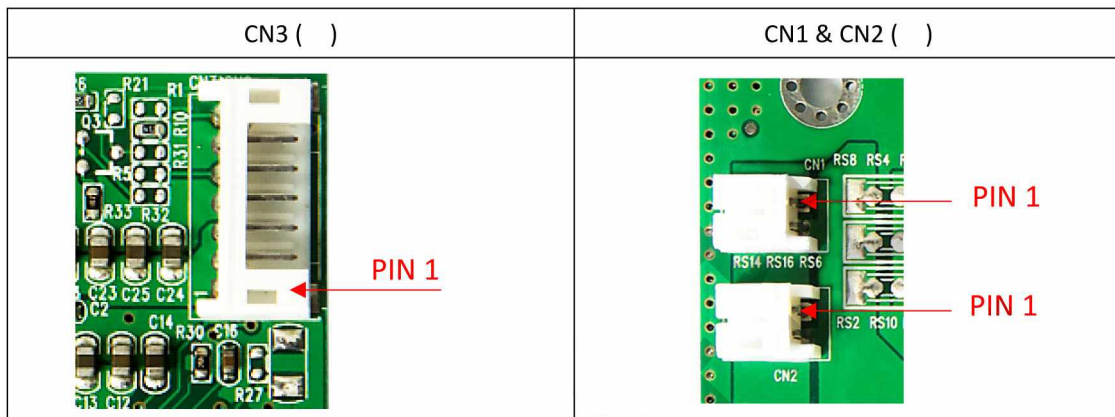
Item	Symbol	Min.	Typ.	Max.	Unit	Remark
Operating Temperature	T_{op}	Ha = 90%RH	0	50	°C	
Storage Temperature	T_{stg}	Ha = 90%RH	-40	60	°C	

8. Connector Socket

8.1. Connector Type

Connector J1	
Connector Name / Designation	For Signal Connector
Manufacturer JST	JST or compatible
Type / Part Number	S7B-PH-SM4-TB or compatible
Mating Housing / Part Number	PHR-7 or compatible

Connector J2	
Connector Name / Designation	For Signal Connector
Manufacturer	JST or compatible
Type / Part Number	SM02B-BHSS-1-TB or compatible
Mating Housing / Part Number	PHR-2 or compatible



8.2. Pin Definition

Connector (CN3)		
Pin No.	Symbol	Description
1	V _{in}	Power Input (+5~+40V)
2	V _{in}	Power Input (+5~+40V)
3	V _{in}	Power Input (+5~+40V)
4	GND	Ground
5	PWM	PWM Brightness Control
6	GND	Ground
7	EN	Backlight on/off Control (5V / 0V)

Connector (CN1 & CN2)		
Pin No.	Symbol	Description
1	V_LED-	LED Power -
2	V_LED+	LED Power +

9. Mechanical Characteristics

9.1. Dimension: 125 (L) *49.9 (W) mm

